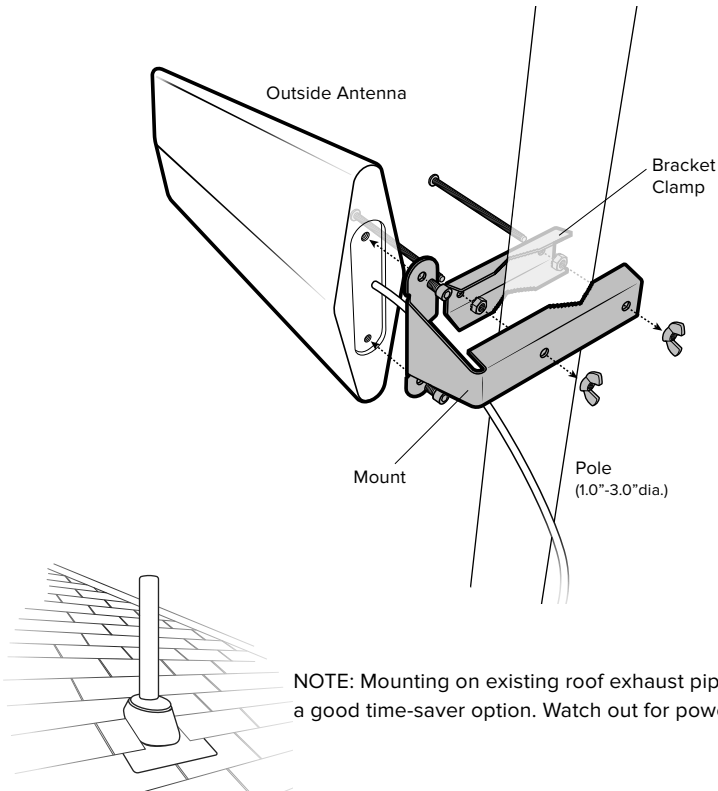


Wilson Outdoor Directional LPDA Antenna 314445

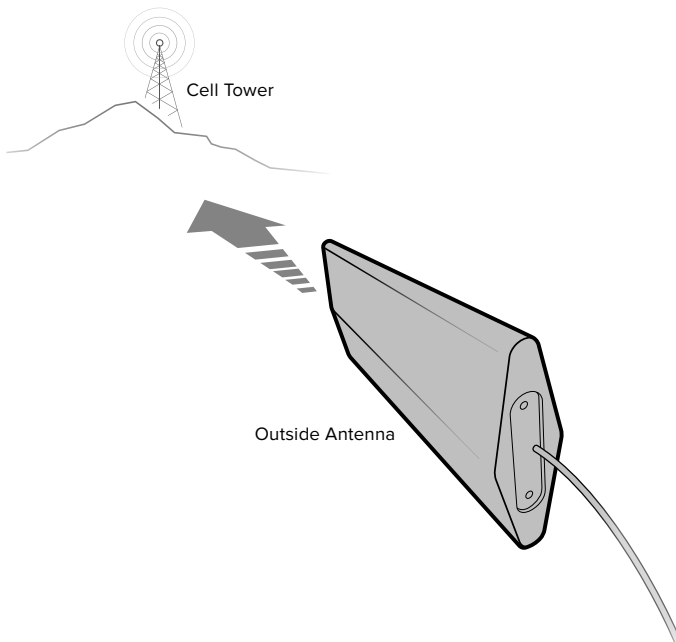
Pole mounting and wall mounting options are included. The pole mounting option is preferred because it will be easier to adjust to the direction of the cell tower.

Attach the **mount** to the outside antenna and use the **bracket clamp** to attach the antenna to a pole or exhaust pipe.



Point the **outside antenna** toward the nearest cell phone tower. To find the nearest tower, use an app such as 'Open Signal'. **This is the most critical step of the installation process because it will determine the overall performance of the booster's system.**

The greater the separation between the inside and outside antennas, the better performance you will get from the booster.



Make sure the inside antenna and outside antennas are set up so they are **facing away** from each other.

If there's not a pole to easily mount the outside antenna, this may be mounted on the fascia by fastening the bracket as shown below.

TIP: Make sure to the side of your house with the strongest cell signal before you mount this on the fascia.

Mounting On Side Of Roof (Fascia)

