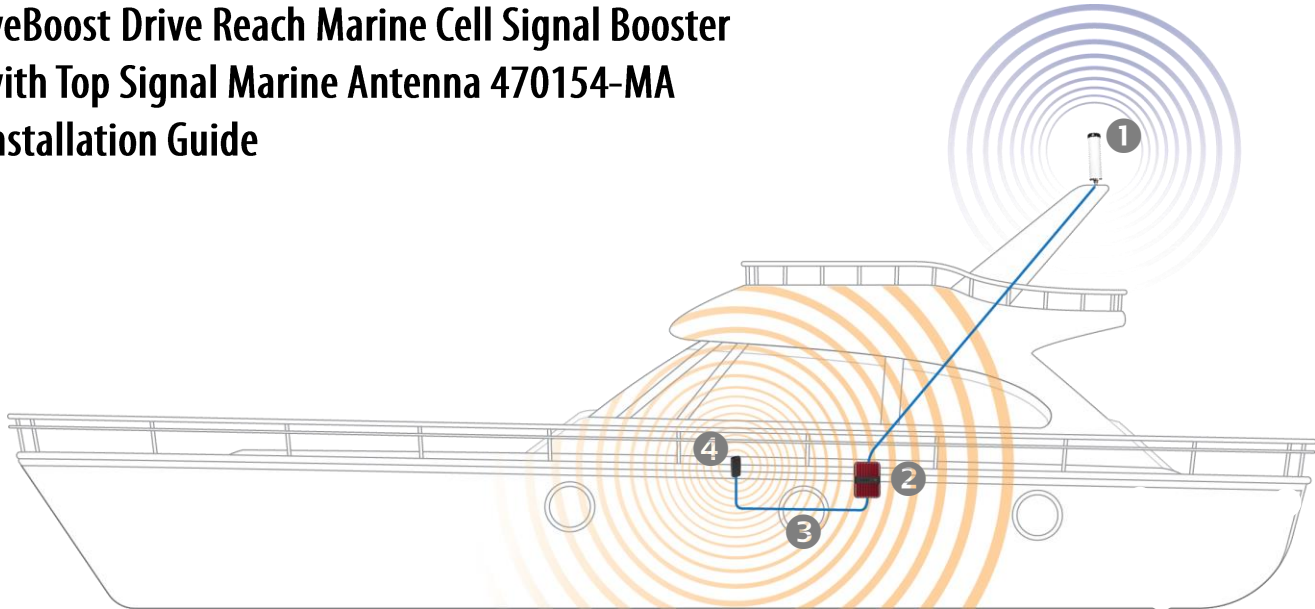


weBoost Drive Reach Marine Cell Signal Booster with Top Signal Marine Antenna 470154-MA Installation Guide



There are **four main components** to install in your boat:

1 The outside marine antenna with ferrule and coax cable

For best performance, the marine antenna should have as much vertical separation from the inside panel antenna as possible.

- A** Attach the ferrule to a 1" x 14 threaded marine mount (like the Shakespeare 4190).
- B** Remove the silicone stopper from the ferrule's side exit opening.
- C** Pull one end of the RG58 or 400-type coax cable* through the *top* of the ferrule & out the side exit.
- D** Twist the cable's large N connector onto the bottom of the antenna & hand tighten.
- E** Twist the antenna onto the ferrule & hand tighten.

Run the coax cable from the antenna to the booster, securing the cable to the mast, tower, or hull.

Do not pinch, kink, loop, or coil the cable.

*If you run 400-type coax cable for the outside antenna, attach the *N-female/SMA-male RG58 jumper cable* to the end near the booster.



Installation tip:

We strongly recommend that you do a "soft installation" before permanently mounting the antennas and pulling cables.

Sail to an area with weak cell signal, then lay out and connect all the components inside your boat. Power up the booster and check the signal you receive from the inside antenna. Compare your internet data speeds with the booster off and the booster on.

Continued on the back side...

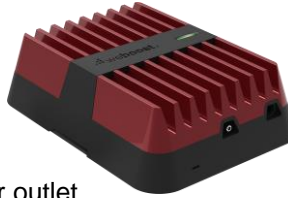
v.20230711

2 weBoost Drive Reach signal booster

The booster needs to be placed where it has access to a 12-volt DC power socket.

An AC power adapter (850015) can be used to power the booster from a 120-volt AC power outlet.

A hardwire power supply (950079) can connect it directly to a 12-volt marine battery. These optional power supplies are available at PowerfulSignal.com.



3 Inside low-profile antenna and coax cable

The inside antenna has a 10-foot length of flexible LMR100 coax cable with an SMA-male connector. Thread the connector onto the booster's INSIDE ANTENNA port.

This antenna broadcasts in the direction its front face is pointed. It mounts to flat surfaces with the included hook-and-loop strip.

For best reception, place your cell phone or cellular hotspot device as close to this antenna as possible.

Do not pinch, kink, loop, or coil the cable.



Usage tip:

The closer your cell phone or cellular hotspot, router, or modem is to the inside antenna, the more signal it will receive.

This is particularly important in areas where outside signal is especially weak, when the broadcast area from the inside antenna may be limited to a few feet.