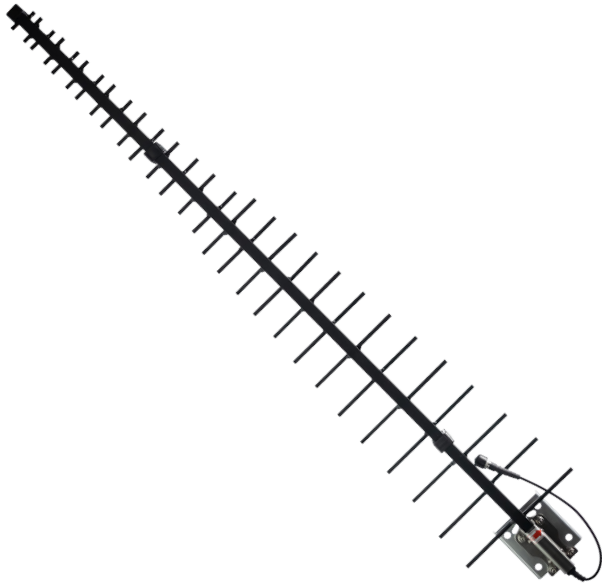
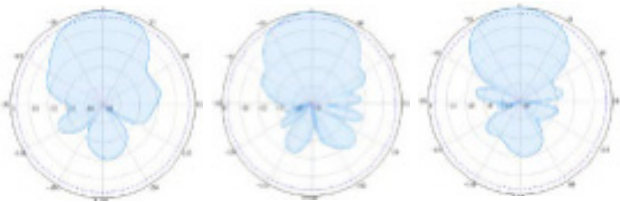


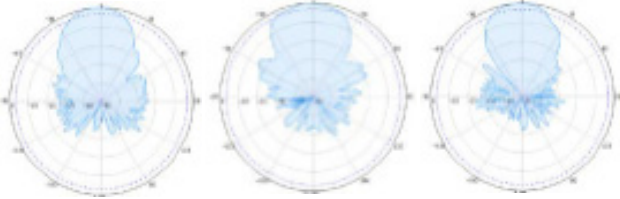
Top Signal High-Gain LPDA Antenna 698–2700 MHz N-Female



Horizontal



Vertical



698-960MHz

1710-2200MHz

2200-2700MHz

Description

The Top Signal TS221101 High-Gain LPDA Antenna works with 698–2700 MHz 5G, 4G LTE, and 3G frequencies. This antenna mounts on poles 1.5”–2.0” in diameter with U-bolts included. This antenna works with all cell phone providers and is made from aluminum intended for outside use.

PRODUCT No: TS221101
 Top Signal High-Gain LPDA Antenna

Features:

11.2 to 13.1 dBi Gain

Outdoor

Directional

N-female

Specifications:

Frequency Range	698-2700 MHz
Gain / VSWR	12.0 dBi (698-960 MHz) / ≤ 2.1
Gain / VSWR	13.1 dBi (1710-2200 MHz) / ≤ 2.1
Gain / VSWR	11.2 dBi (2200-2700 MHz) / ≤ 2.1
Vertical Beam	Horizontal Beam
46°	52° (698-960 MHz)
40°	45° (1710-2200 MHz)
42°	57° (2200-2700 MHz)
Polarization	Linear
Input Impedance	50 ohm
Input Max Power	50 W
Lightning Protection	DC ground
Antenna Connector	N-Female
Antenna Dimensions	44 in., 1100 mm
Antenna Weight	2.6 lbs., 1.2 kg
Reflector Material	Aluminum
Rated Wind Velocity	130 mph, 210 km/h
Mounting Pole	1.5-2.0 in. poles
Color	Black
Mounting Type	U-bolts with bracket (included)