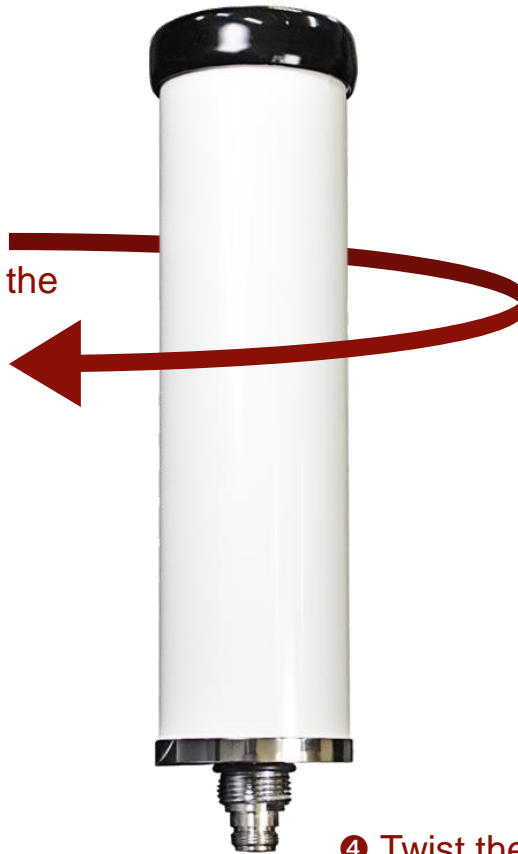


Top Signal Marine Omni Antenna N-Female TS210461 Installation Guide

5 Twist the antenna onto the ferrule & hand tighten.

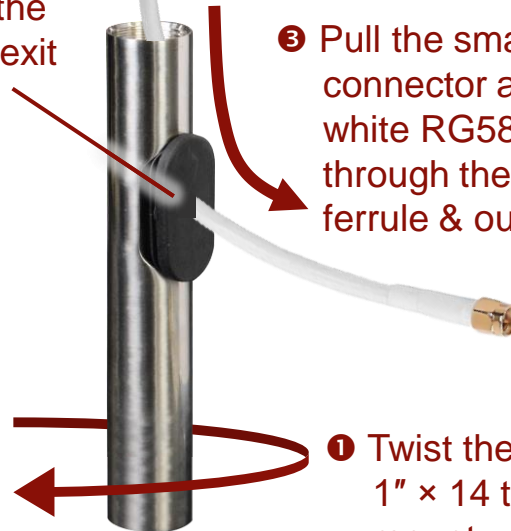


4 Twist the large N connector onto the bottom of the antenna & hand tighten.



2 Remove the stopper from the ferrule's side-exit opening.

3 Pull the small SMA connector at the end of the white RG58 coax cable* through the top of the ferrule & out the side exit.



1 Twist the ferrule onto a 1" x 14 thread marine mount.



*If using 400-type coax cable with this antenna, also pull it through the top of the ferrule & out the side exit.