

Top Signal 5G OTR Antenna TS210402 Installation Guide

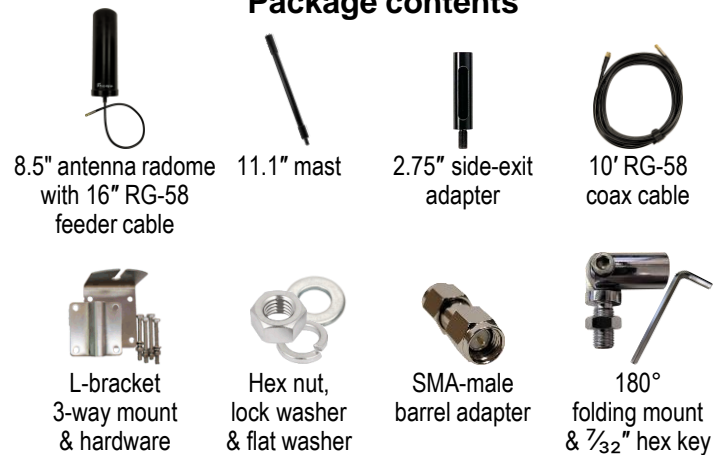
Before you begin

Careful planning is key to a successful installation of your antenna.

Mount the antenna on your vehicle in a location and at a height where it will not be struck by overpasses, garage doors, and other low-clearance obstacles.

The cylinder at the top of the antenna assembly should be above the roofline of the vehicle and, if possible, have a clear line of sight in all directions.

Package contents



Choose one of three antenna setup options

1 Antenna & side-exit adapter (11.25")

Thread the feeder cable through the top of the adapter and out through the side opening. Slide the adapter up to the antenna, feeding the cable gently as you go to avoid scraping the cable's exterior jacket. To reduce cable twisting, hold the antenna upright and twist the adapter onto the antenna's threaded mount. Hand tighten the adapter to the antenna.

2 Antenna & mast (19.5")

Thread the feeder cable through the opening at the top (inside threaded portion) of the mast extension. With the feeder cable fully inserted, slowly turn the mast until the cable finds the exit hole at the bottom (outside threaded portion). Thread the mast onto the antenna and hand tighten.

3 Antenna, side-exit adapter & mast (22.25")

Follow the instructions for option 2, above. Thread the mast onto the side-exit adapter, feeding the cable out through the side opening. Hand tighten the mast to the adapter.

Attach the male end of 10' RG58 coax cable to the female connector on the feeder cable. Use the SMA-male barrel adapter to connect the other end of the cable to your cell phone signal booster.



Important!

Regularly check the antenna's threaded mount points and nuts; retighten as needed.

LOCTITE® or similar brands of locking fluid may be used to prevent threaded points on the mast, side-exit adapter, coax cable, and nuts from coming loose.

Mount the antenna to your vehicle

The threaded base of the antenna will fit a standard $\frac{3}{8}$ " x 24-thread CB mount. If your vehicle doesn't have a built-in mount point, use the included three-way mount to attach it to a rail.

- Insert the mast or side-exit adapter's threaded base ① into the channel at the top of the L-bracket ②. Insert the flat washer onto the threaded base, with the flat side against the L-bracket ③. Add the split lock washer ④, then use a wrench to tighten the hex nut ⑤ firmly against the lock washer.
- The channeled mounting plate can be attached to the back of the L-bracket horizontally or vertically. Place the L-bracket ① against one side of the rail and the mounting plate ② on the other side. Insert the bolts ③ through the mounting plate. Insert a flat washer (flat side first) ④, a lock washer ⑤, and a hex nut ⑥ onto each bolt. Use a wrench to tighten the hex nuts firmly against the lock washers.



Using the folding mount

The included 180° folding mount allows you to lay the antenna flat for low-clearance areas or storage.

Insert the side-exit adapter into the top of the folding mount. Hand tighten the adapter to the mount.

Use the $\frac{7}{32}$ " hex key (Allen wrench) to loosen the bolt and lock washer on the mount. Set the antenna at the needed angle. Retighten the bolt and lock washer.

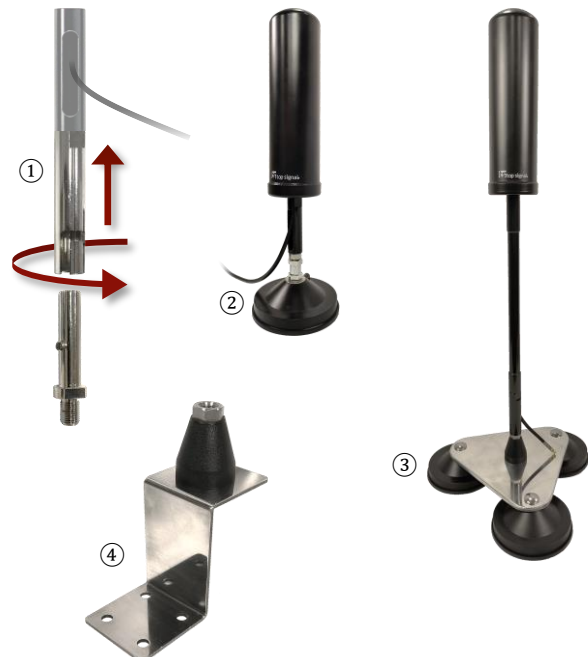
Regularly check the folding mount's bolt; retighten as needed.



Optional mounts

Powerful Signal also offers these mounts for the Top Signal 5G OTR antenna (*sold separately*).

- ① *Top Signal Quick-Release Mount (TS431003)*
This push–turn–release mount allows you to remove your OTR antenna in seconds for low-clearance areas or storage.
- ② *Top Signal MagMAX magnetic mount (TS432010)*
This magnetic mount for steel truck cabs, toolboxes, and roof racks securely holds the Top Signal 5G OTR antenna with the side-exit adapter. (Maximum antenna height 16".)
- ③ *Top Signal MagMAX 3X magnetic mount (TS432011)*
This magnetic mount securely holds the antenna with the mast and side-exit adapter. (Maximum antenna height 42".)
- ④ *Top Signal stainless steel S bracket (TS432006)*
This mount secures to RV and trailer roofs and other sturdy, drillable surfaces. It has a $\frac{5}{8}$ " hole that accepts stud mounts like the gumdrop/beehive CB mount (pictured).



Visit PowerfulSignal.com to purchase these and other antenna mounts.