

# High Gain LPDA Antenna

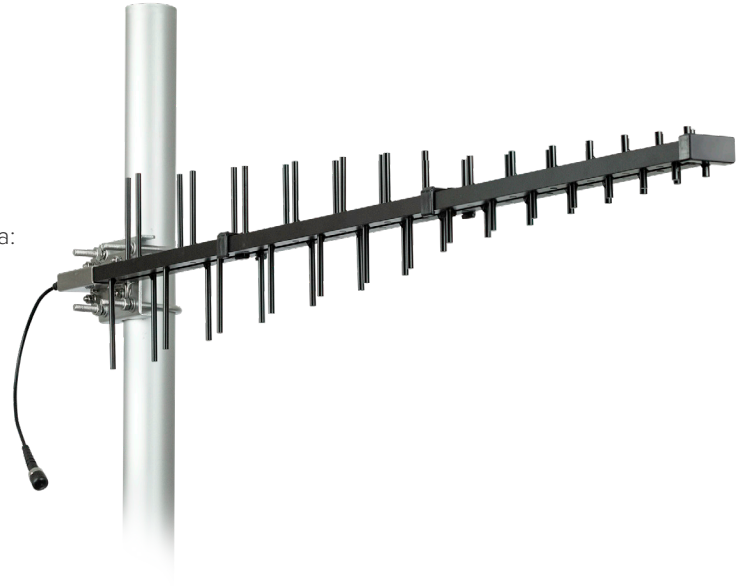
**SKU:** 311228

**MSRP:** \$249.99

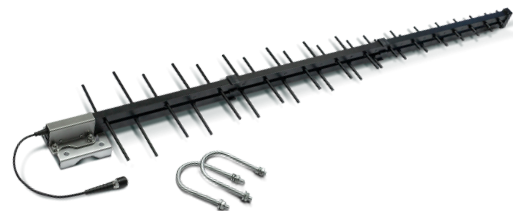
## FEATURES

- Works on all worldwide cellular bands for voice and data: LTE/CDMA/GSM/UMTS/AWS
- High gain antenna for WilsonPRO cellular repeater/boosters
- Designed for building exterior installation; direct at cell tower for best signal
- Rugged and waterproof for all weather operation
- Simple install kit with tilt/swivel bracket for 1.5" to 2" diameter pipe/mast
- 2 year warranty

**⚠️ WARNING:** This product can expose you to chemicals including Nickel, which is known to the State of California to cause cancer, and Bisphenol A, which is known to the State of California to cause birth defects or other reproductive harm. For more information go to [www.P65Warnings.ca.gov](http://www.P65Warnings.ca.gov)



## Kit Includes



High Gain LPDA Antenna with mounting hardware

## Specifications

### ELECTRICAL

Frequency Band (MHz)	698-806	806-960	1710-1880	1900-2200	2200-2700
Peak Gain (dBi)	12.0	12.0	12.9	13.1	11.2
VSWR	<2:1		<2:1		
Polarization	Linear				
Half-Power Azimuth Beamwidth (°)	60	60	38	46	44
Half-Power Elevation Beamwidth (°)	46	42	30	34	34
Impedance (Ω)	50				
Maximum Power (W)	50				

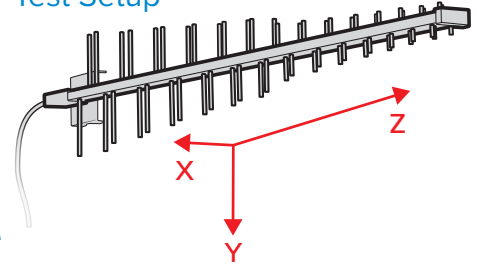
### MECHANICAL

Model	311228
Connector	N-Female
Length (in / cm)	44.0 / 111.7
Antenna weight (lb / kg)	3.5 / 1.5
Rated Wind Velocity (Mph)	130
Radiator Material	Aluminum
Pole Mount (in / cm)	1.5-2.0 / 3.8-5.0

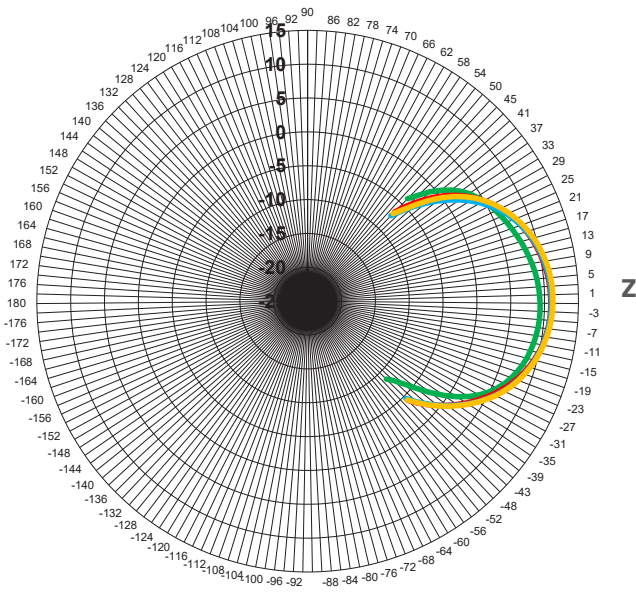
## Radiation Patterns, 700-960 MHz

700 MHz    800 MHz    900 MHz    960 MHz

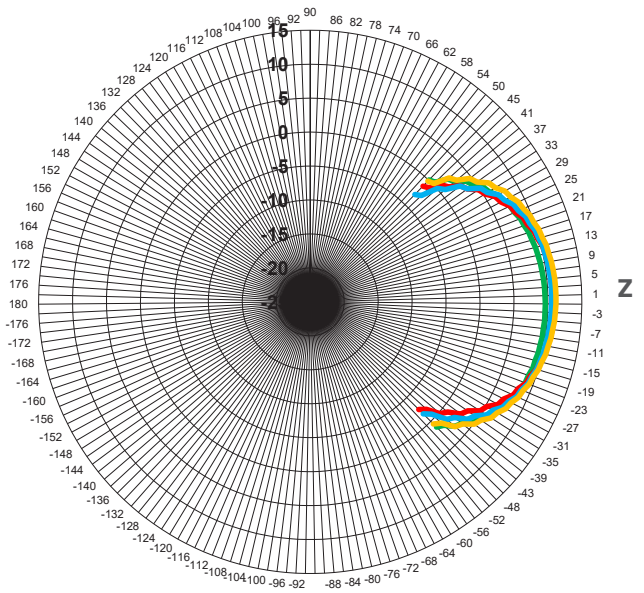
Test Setup



XY Plane



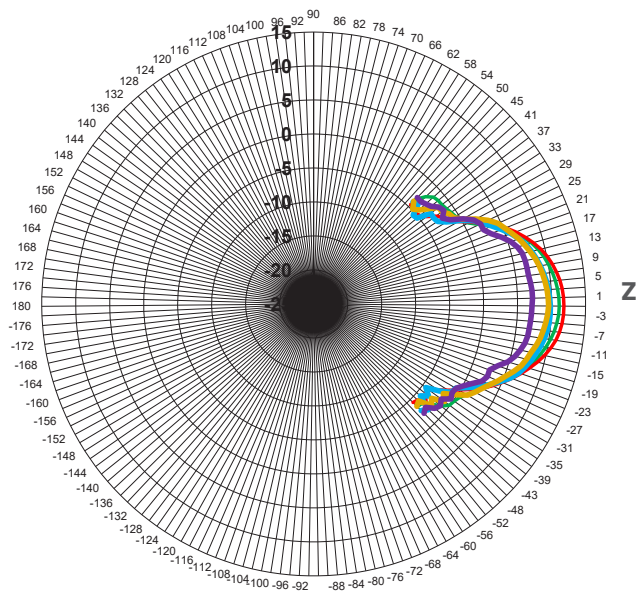
YZ Plane



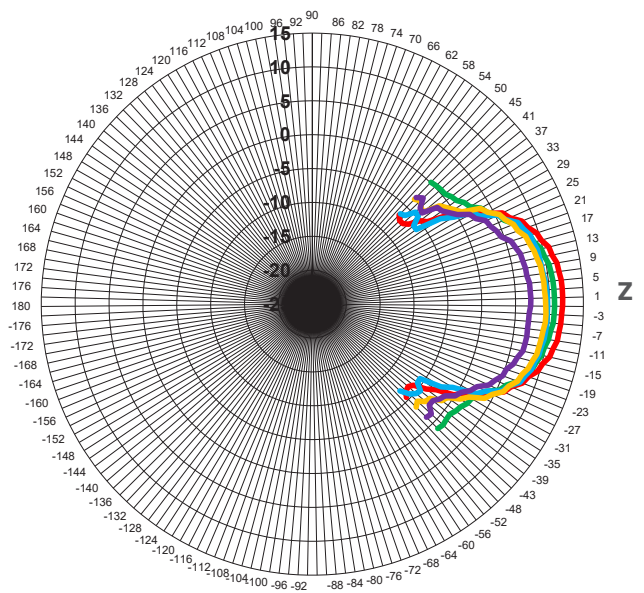
## Radiation Patterns, 1700-2200 MHz

1700 MHz    1900 MHz    2200 MHz    2400 MHz    2700 MHz

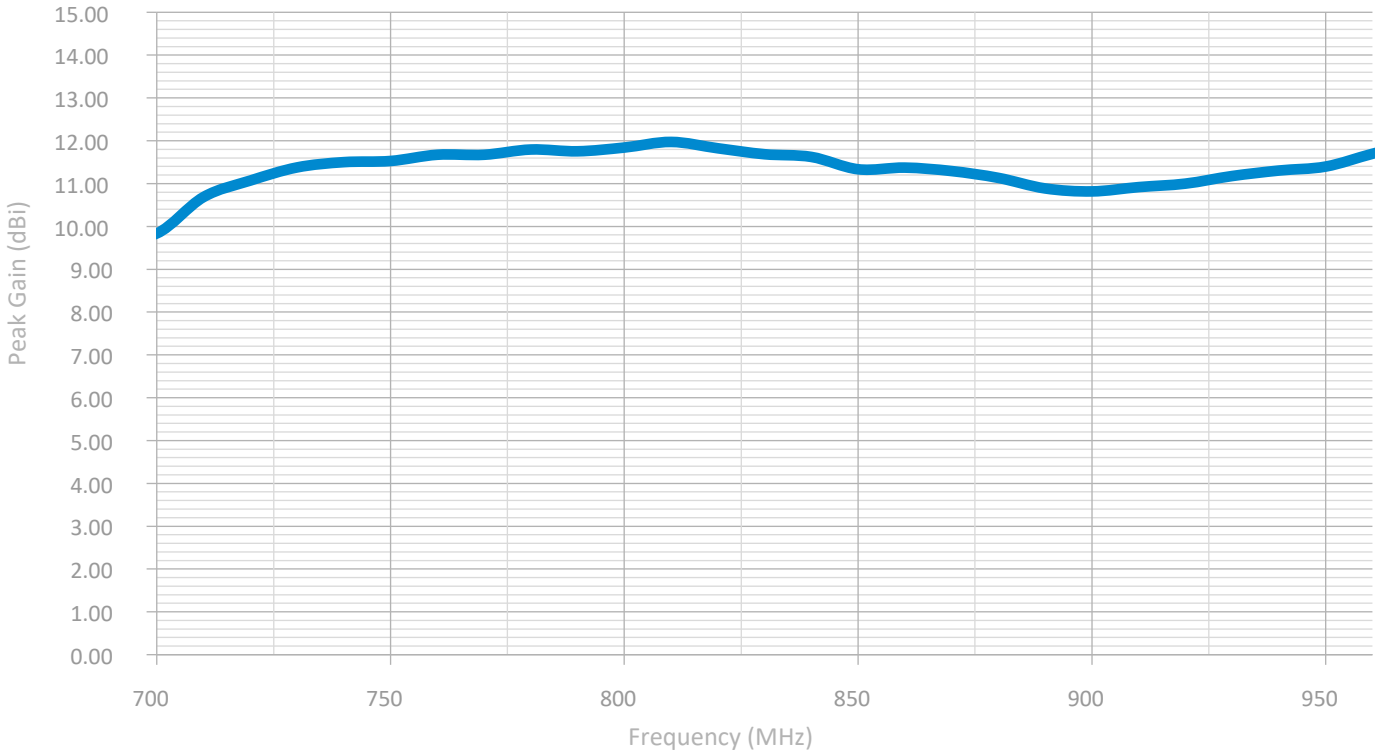
XY Plane



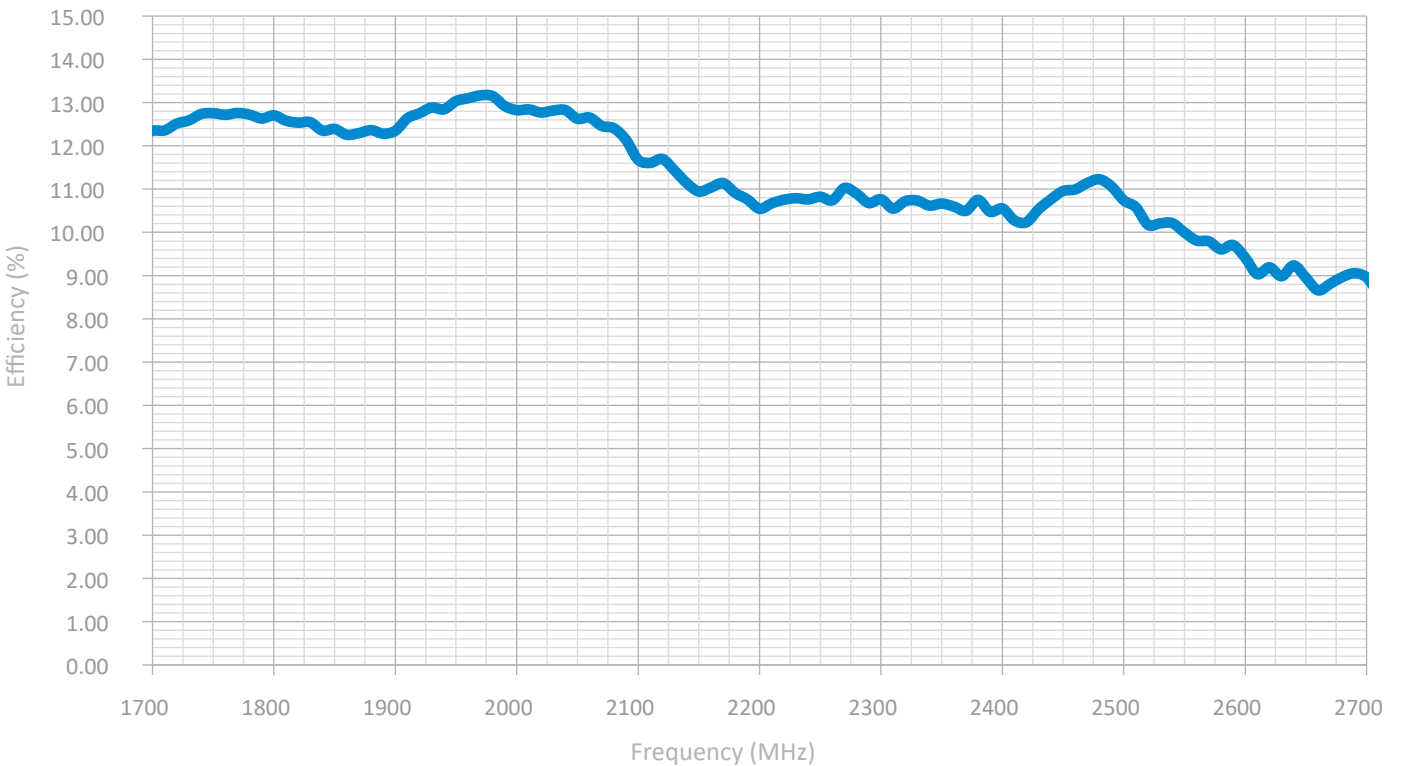
YZ Plane



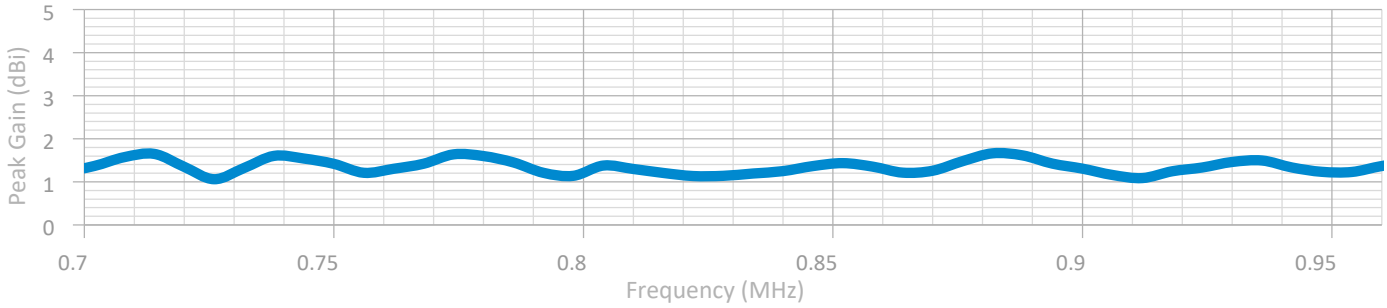
## Peak Gain Low Band



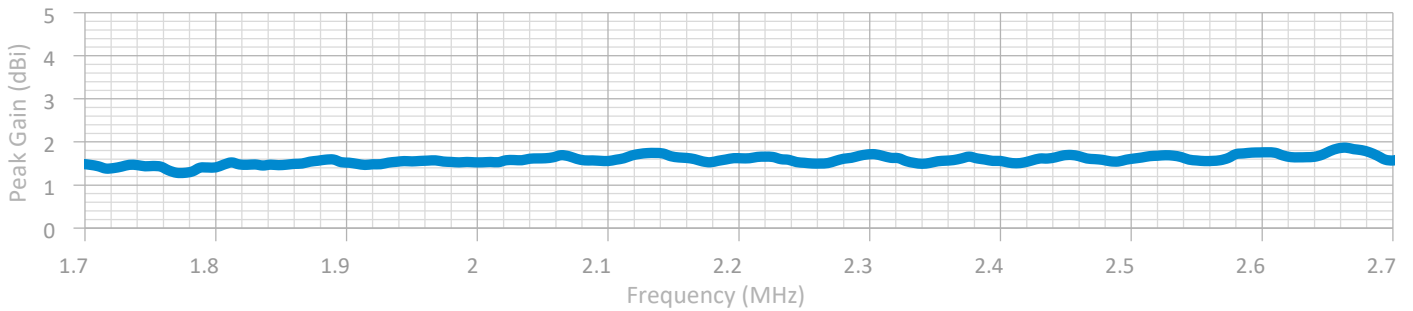
## Peak Gain High Band





## VSWR Low Band



## VSWR High Band



 2 Year Warranty

\* **WARNING:** Cancer and Reproductive Harm - [www.P65Warnings.ca.gov](http://www.P65Warnings.ca.gov).



UPC

