

4G LTE OMNI PLUS ANTENNA

SKU: 304422 (50 ohm) & 304423 (75 ohm)

MSRP: \$99.99

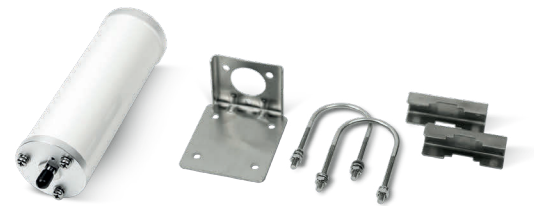
FEATURES

- High gain signal output
- Boost 698 – 960 & 1710 -2700 MHz cellular frequencies
- Boosts voice & data
- Multi-mount bracket for mast or wall
- Compact, low visual impact
- Weather resistant
- Easy install at home or office
- Connects to building cell phone signal boosters & modems
- 2 year warranty

† **WARNING:** This product can expose you to chemicals including Nickel, which is known to the State of California to cause cancer, and Bisphenol A, which is known to the State of California to cause birth defects or other reproductive harm. For more information go to www.P65Warnings.ca.gov



Kit Includes



4G LTE Omni Plus
Antenna

Multi-Mount Bracket

Specifications

ELECTRICAL

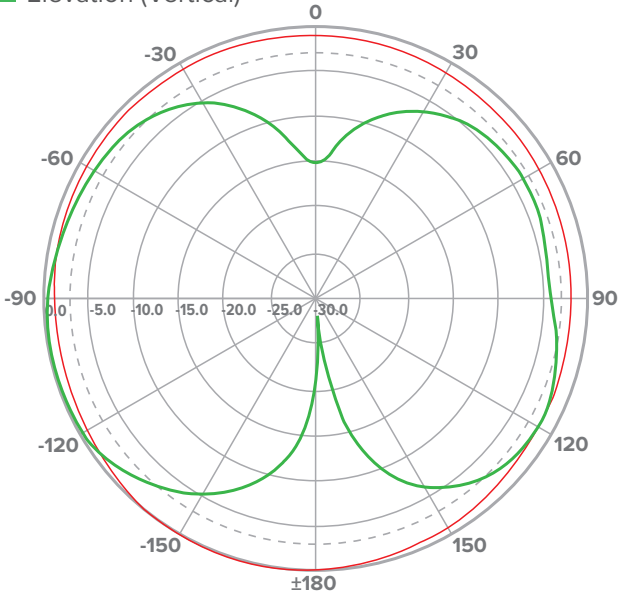
| | | |
|-------------------------|-----------|-----------|
| Frequency Range (MHz) | 698-960 | 1710-2700 |
| Polarization | Vertical | |
| Gain (dBi) | 2 | 5 |
| Horizontal Beamwidth(°) | 360 | |
| Vertical Beamwidth(°) | 60 | |
| Impedance(Ω) | 50 | 75 |
| VSWR | <1.8 | |
| Maximum input power(W) | 100 | |
| Lightning Protection | DC Ground | |

MECHANICAL

| | | |
|-------------------------------------|---------------------------|----------|
| Model | 304422 | 304423 |
| Dimensions (inch / mm) | 2.5 x 9.8 / 63 x 250 | |
| Connector | N-female | F-female |
| Weight (lb / kg) | 1.9 / 0.85 | |
| Rated wind velocity (mph / kph) | 130 / 210 | |
| Radome material | 50 | |
| Color | White | |
| Operating temperature (°C / F) | -40 to + 149 / -40 to +65 | |
| Mounting pole or wall mount (in/mm) | 1.5 – 2.0 / 38 – 52 | |
| RoHS | Compliant | |

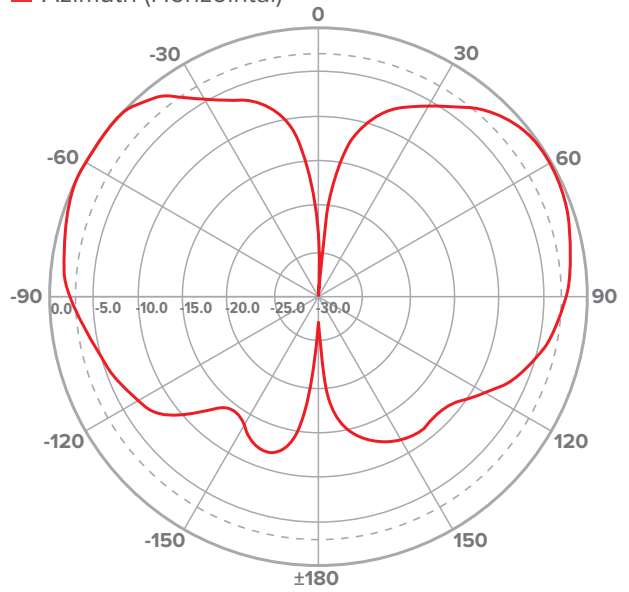
Radiation Pattern Low-Band (Typical)

■ Elevation (Vertical)



Radiation Pattern High-Band (Typical)

■ Azimuth (Horizontal)



Support

 2 Year Warranty

* **WARNING:** Cancer and Reproductive Harm - www.P65Warnings.ca.gov.

ASSEMBLED IN THE USA



UPC

