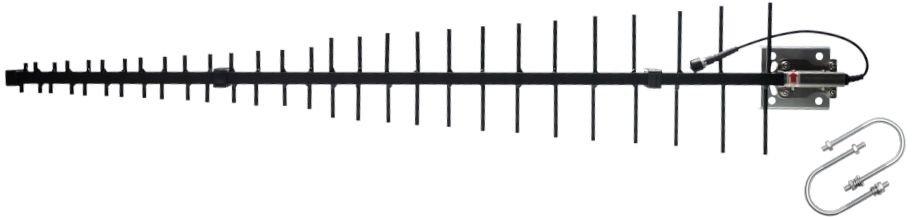


**LS** top signal® A Powerful Signal Brand



**High-Gain LPDA Antenna**

## Specifications:

Frequency Range 698-2700 MHz

Peak Gain 11.2 - 13.1 dBi (698-2700 MHz) /  $\leq 2.1$

**Vertical Beam** **Horizontal Beam**

46° 52° (698-960 MHz)

40° 45° (1710-2200 MHz)

42° 57° (2200-2700 MHz)

Polarization Linear

Input Impedance 50 ohm

Input Max Power 50 W

Antenna Connector N-Female

Antenna Dimensions 44 inch, 1100 mm

Antenna Weight 2.6 lbs, 1.2 kg

Reflector Material Aluminum

Rated Wind Velocity 130 mph, 210 km/h

Mounting Pole 1.5 - 2.0 in poles

Mounting Type U-Bolts with bracket (included)

## Description

The Top Signal TS221101 High Gain LPDA Antenna works with 698-2700 MHz 5G, 4G LTE, and 3G frequencies. This antenna mounts on poles 1.5 – 2.0 inches in diameter with U-bolts (included). This antenna works with all cell phone providers and is made from aluminum intended for outside use.

---

## Installation Instructions

1. Mount the antenna using the U-Bolts to a pole.
  2. Connect the antenna to a cellular signal booster system.
  3. Determine the direction to point the antenna by using a cell signal meter, cellmapper.net, or a phone app suggested by the booster manufacturer.
  4. The antenna works best when placed in an unobstructed location, preferably with a clear line-of-sight to the cell tower.
-

## Technical Support and Warranty

Top Signal cellular components are warranted for two (2) years against defects in workmanship and/or materials.

Products have a 90-day return period from date of original purchase unless otherwise specified. Call Powerful Signal within 90 days if you wish to return any product ordered from us. RMA number must be issued (Return Merchandise Authorization) from Powerful Signal for any product being returned.

If you have support or troubleshooting questions, please don't hesitate to contact us.

You can reach us at **435-634-6800** (Monday–Friday, 8:00 am–4:30 pm MT).

---

**PowerfulSignal**  
Stronger Signal Solutions