

SureCall Wide Band Outdoor Yagi Antenna SC-231W User Guide

- Wide Band (698 – 2700 MHz)
- 2G/3G/4G and WLAN systems
- Directional antenna – designed to be pointed directly at the cellular tower
- 8 dBi Gain
- Designed for outdoor use only



Overview

The SC-231W is an outdoor yagi antenna that can be aimed in the direction of the closest cellular tower and pick up signals up to 30 miles away. The wide band yagi antenna is designed to cover 2G/3G/4G/and WLAN systems for Cellular, PCS, AWS and LTE frequencies.

When installing, any metallic rods must be at least 3 feet from the antenna. Mount the entire assembly to a 1 to 2 inch diameter pole (not included). In addition to the antenna, mounting equipment is included for mounting to either a flat horizontal surface or wall. For best results, the white fiber-glass portion of the antenna should be mounted above the roof line and unobstructed in the direction of the tower.

Installation

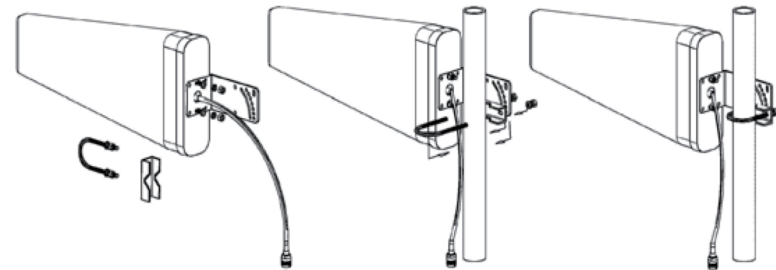
Step 1: Install U-Bolt on pole

Step 2: Slide pipe clamp over U-Bolt with the flat side facing away from the pipe.

Step 3: Slide antenna bracket onto U-Bolt in desired location.

Step 4: Install flat washer, split washer and nut, hand tighten

Note: Antenna may be installed on a variety of pipe angles, insure that the antenna is pointing in the direction of the closest cellular tower and is vertical with the drip hole at the bottom.



Specifications

Frequency	698-806 / 806-960 / 1710-2700 MHz
Input Impedance	75 ohm
Antenna Gain	8 dBi
VSWR	≤2.0
Polarization Type	Vertical
Radiation	Directional
Maximum Power	50 Watt
Connector type	F-Female
Diameter	Φ40~50
Dimension	17.3" x 8" x 1.45"
Color	White
Mount	Mounts on pipe with up to 2" diameter
Weight	2 lb 4 oz
Beamwidth	E50 H85 / E60 H85 / E50 H60